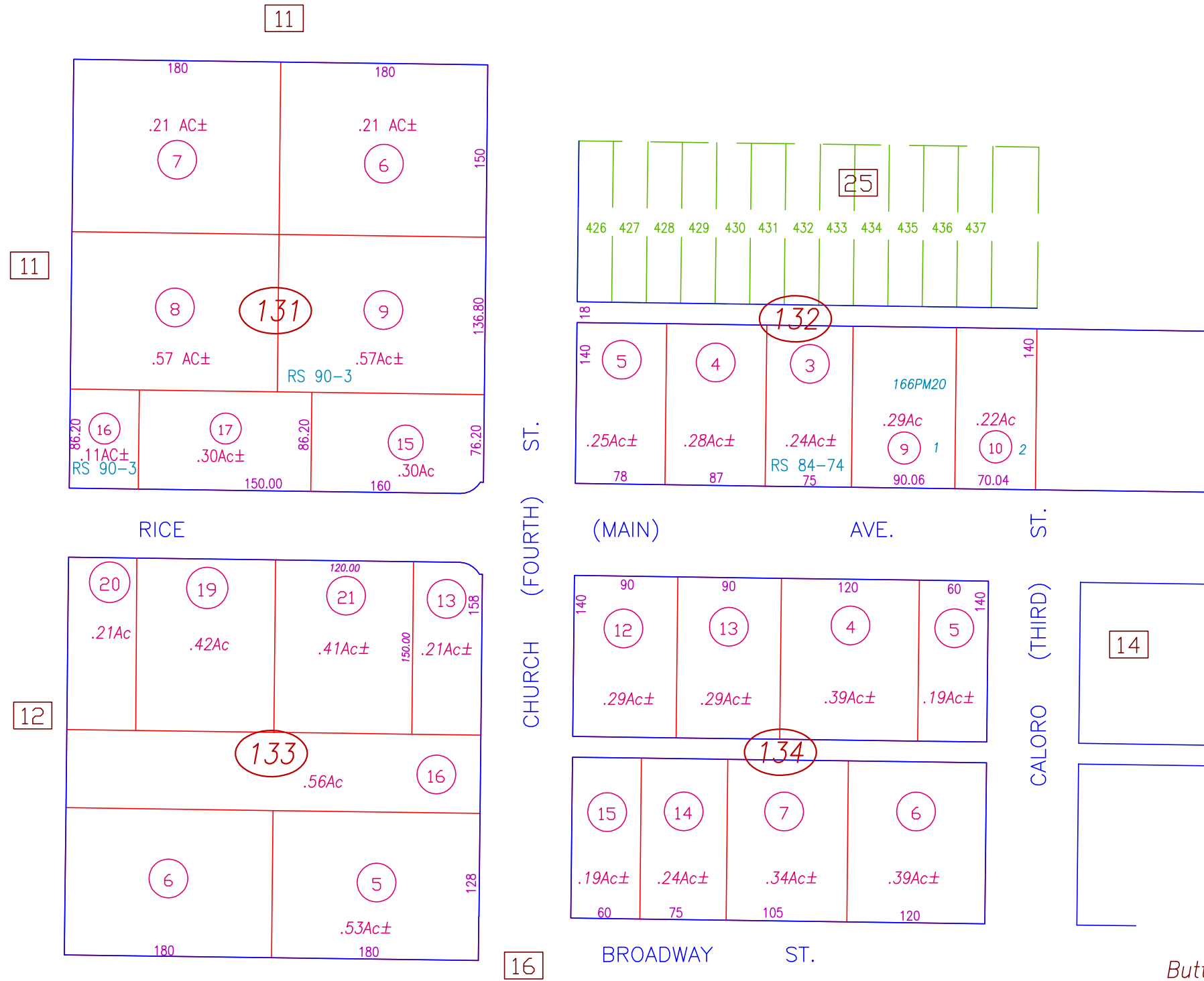


PTN. SEC. 16, T.19N. R.2E. M.D.B.&M.



All Assessors' maps are prepared for local property assessment purposes ONLY and the parcels shown thereon may not comply with State and local subdivision ordinances. No liability is assumed for the use of the information shown on any Assessors' map.

Butte County Assessor's Map
Book 29, Page 13

CREATED BY	SDT	CREATED ON	1 -1997
REVISED BY	SDT	REVISED ON	05-11-2006
		EFFECTIVE	2006-07 ROLL
Compiled By The Butte County Assessor's Office			